



KONICA MINOLTA



FLEET REMOTE MONITORING & MANAGEMENT

RETHINK EFFICIENCY

Giving Shape to Ideas

IS FLEET MONITORING GETTING YOU DOWN?

Monitoring and managing your fleet of multifunctional devices (MFDs) and printers demands time, skills and knowledge; and can be costly, too. To meet the associated regulatory and security requirements, you need specialist technical expertise and dedicated resources. And as your business grows and becomes more complex, managing an expanding device fleet can prove even more challenging and time consuming.

Now there's Konica Minolta's Fleet Remote Monitoring & Management (Fleet RMM) solution. It lets you:

- Monitor your Konica Minolta fleet* remotely from a central location
- Quickly and easily optimise device settings
- Manage your devices in line with your organisation's security policies and standards

Fleet RMM gives you access to all the status information and other device data that's critical to today's IT teams. With this data to hand, you'll be poised to ensure a smooth-running device fleet that supports everyone's day-to-day work and contributes to your organisation's overall productivity and performance.

You'll benefit from all the Konica Minolta expertise that's built in to Fleet RMM, which helps to make fleet management a more efficient, less demanding process. So, you'll save time and resources that can be refocused on your core business.

Konica Minolta may be able to provide Fleet RMM to you as a service. Ask your Account Manager about this option.

*not available for all models

TAKE MONITORING AND MANAGEMENT TO A NEW LEVEL

Fleet RMM is a cost-effective, easy-to-use web application that’s installed in your network environment. Because it runs locally, it meets many organisations’ security-related preferences for an on-prem solution.

Run your fleet more efficiently

Fleet RMM integrates thousands of settings for Konica Minolta MFDs and printers into a single tool, enabling your IT administrator to change device settings remotely, scheduled and recurring.

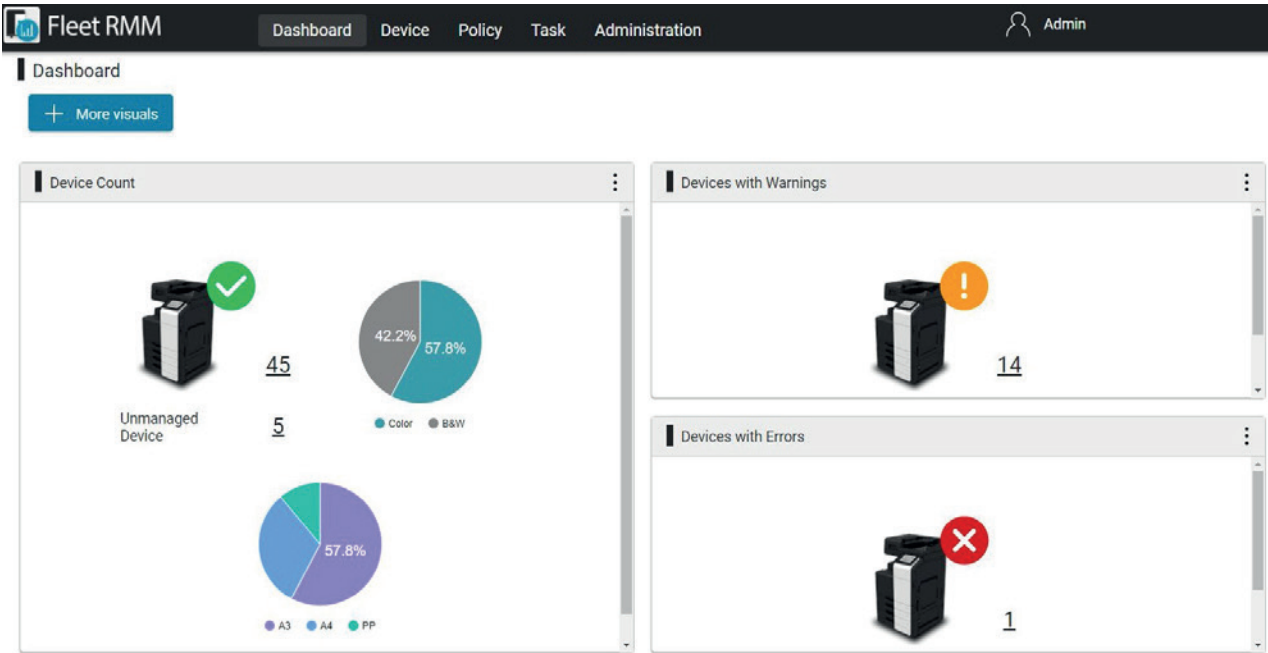
You can also use Fleet RMM to change the settings of multiple devices at the same time. This makes it quick and easy to implement identical settings on lots of devices at once, and helps your internal processes flow smoothly and flawlessly.

A firmware update of the entire system can be planned and carried out, including Card Reader and their security configuration.

Help administrators work more effectively

Fleet RMM’s dashboard gives IT administrators an accurate customisable overview of your device fleet, showing, for example, the number of devices managed by Fleet RMM, and the counter values of the top 10 output devices.

The solution also provides the administrator (or other designated user) with device status notifications. It does this by obtaining counter or status information from each device and sending it by email. The administrator can then review and evaluate the information, and recommend any action needed to identify and resolve potential issues. This allows much more proactive management of your device fleet, for improved uptime and user productivity.





KONICA MINOLTA

KEY FEATURES

Dashboard

- A management screen for at-a-glance monitoring and quick and easy assessment of all devices using graphs and other visualisations.
- Can be installed on more than one PC, enabling admin tasks to be shared. Users can customise the view in line with their own needs and responsibilities.

Smart filters, tags and groups

- Group multiple devices to simplify device management.
- Create a device hierarchy within a group by setting parent-child relationships.
- Use dynamic filters to place devices in different groups. Simplify monitoring and management, and filter by model name, serial number, contact and other criteria.
- Tag devices to provide additional view options in parallel to filters and groups.

User management

- Register and certify accessing users with different access and security levels; or certify them using Active Directory user information.
- Set attribution conditions for Active Directory users to grant access to all users who fit the conditions — making effective use of the user information you already have.

Role management

- Use roles to define combinations of authority to use Fleet RMM functions, then manage the scope of accessible functions by assigning roles to users.
- Assign a device group to a role to enable the accessible functions of multiple devices to be controlled in bulk through Fleet RMM.

Normal and service modes

- Normal mode: obtain or change device administrator and user settings.
- Service mode: access a device's service settings. Service mode must be activated before it can be used. The next time users with Fleet RMM service authority log in, they'll be able to use service mode functions.

Bulk setting templates

- Create templates for error-free bulk rollout of the same settings to multiple devices at the same time.
- You can distribute a template immediately or at a pre-scheduled time.

Product appearance, configuration and/or specifications are subject to change without notice. This product is not available for some countries or regions.

KONICA MINOLTA, symbol mark, Giving Shape to Ideas, bizhub, Konica Minolta Optimised Print Services logo and bizhub SECURE logo are registered trademarks or trademarks of KONICA MINOLTA, INC. Android, Google, and Google Cloud Print are registered trademarks or trademarks of Google Inc. in the U.S. and other countries. Mac and App Store are registered trademarks or trademarks of Apple Inc. in the U.S. and other countries. iOS is a registered trademark or trademark of Cisco Systems, Inc. in the U.S. and other countries. Mopria and Mopria logo are registered trademarks or trademarks of Mopria Alliance Inc. Bluetooth is a registered trademark or trademark of Bluetooth SIG, Inc. Wi-Fi is a registered trademark or trademark of Wi-Fi Alliance. Microsoft Store, Windows Mobile and Power Point are registered trademarks or trademarks of Microsoft Corporation in the U.S. or other countries. Bitdefender logo is a registered trademark or trademark of Bitdefender IPR Management Ltd. All other brands and product names are registered trademarks or trademarks of their respective companies or organisations.

Requirements for safe use

- Please read and follow the instruction manual to ensure safe operation.
- Only operate using appropriate power supply and voltage.
- Connecting the earth wire to an inappropriate place may cause explosion or electric shock. Please connect accordingly (Taiwan and the Philippines only).

Konica Minolta Business Solutions (HK) Ltd. | www.konicaminolta.hk

Konica Minolta

 2565 8181

 bhkg_sales@gcp.konicaminolta.hk

 Konica Minolta Hong Kong

 Konica Minolta Business Solutions Hong Kong



MKT-2410-1027