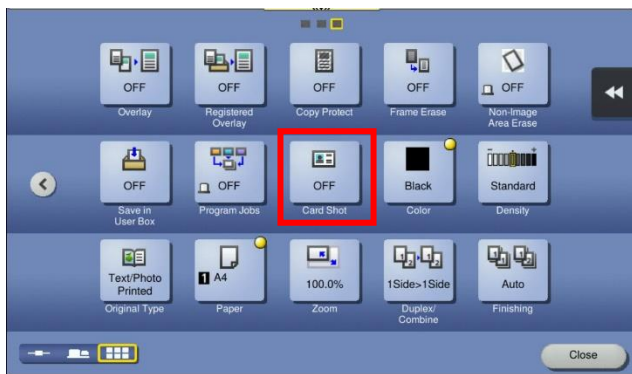


Copy Function



Copy both sides of an ID card onto one page

1. Choose output tray
2. Touch [Application]
3. Choose [Card Shot]
4. Touch [On]
5. Place the Card on the Platen
6. Input the size of the card, then touch [OK] and [Close]
7. Touch [Start] to copy the front side, then turn the card to back side (place on same area), and touch [start] to copy
8. After finish touch [Finish] and [Start] to copy it



複印功能

把身份證正面和背面複印在同一頁面上

1. 選擇輸出紙盤
2. 按 [應用]
3. 按 [ID 影印]
4. 按 [開啟]
5. 將卡片放在玻璃鏡面左上角
6. 輸入卡片大小，按  再按 
7. 按 [啟動] 複印卡片正面，並反轉卡片背面 (放於相同位置上)，再按 [啟動]
8. 完成後按 [完成]，再按 [啟動] 打印

