



KONICA MINOLTA

**bizhub C450i**

**bizhub i-SERIES**

**IS AT THE HEART  
OF YOUR BUSINESS**

**RETHINK IT**

Giving Shape to Ideas

# MODERN, INTUITIVE DESIGN

Discover the fully redesigned bizhub i-Series User Interface that has been inspired by the look and feel of a smartphone. The device has a simple structure, is intuitive to operate and offers users the choice between a basic or classic interface style. The control panel can be easily customised to meet customer requirements and can be personalised for individual users.



## Designed for people

The stylish new bizhub i-Series looks at home in today's office environment, with contemporary touches like a floating operation panel, rounded edges and LED status indicators.



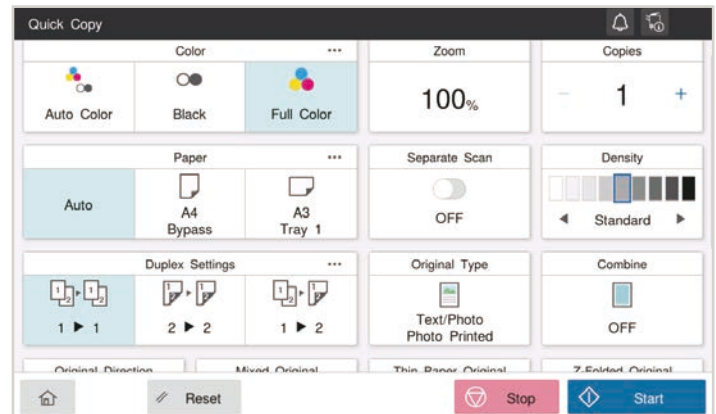
## Easy-to-see, easy-to-use 10.1 inch panel

With a 24° to 90° tilt angle, the large 10.1" tablet style touch panel provides convenient operation for all users, especially those in a wheelchair.



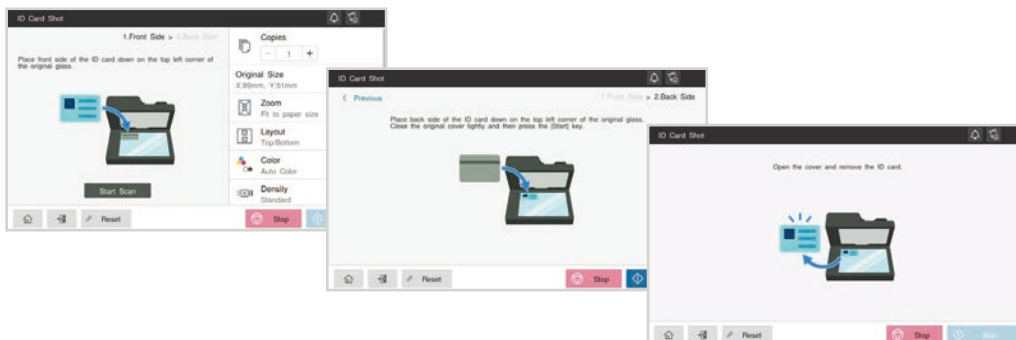
## Quick Copy

The new Quick Copy mode card type offers an overview of all of the main settings at a glance for quick access.

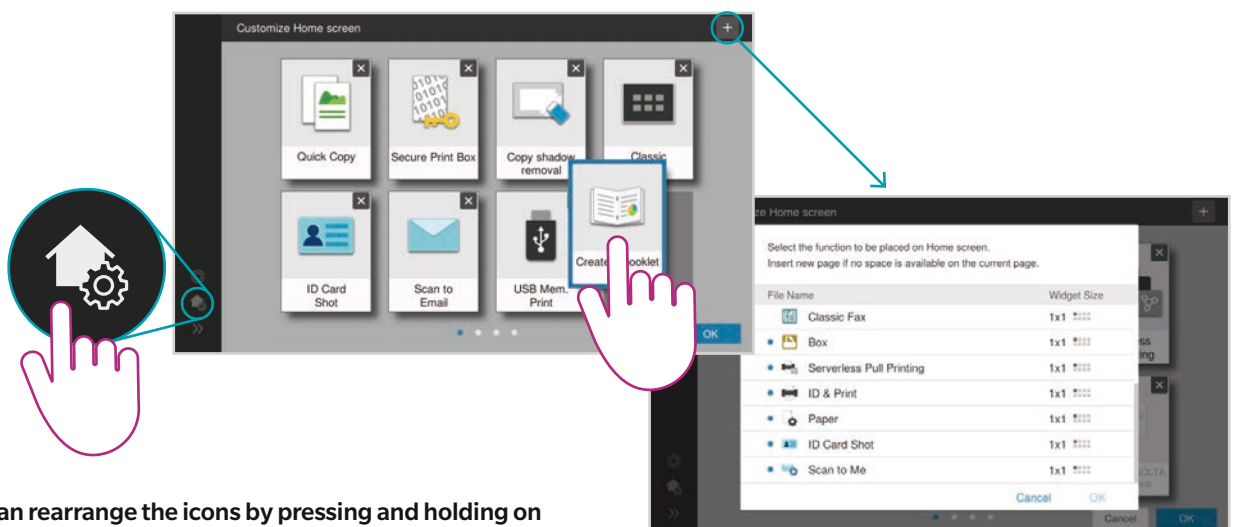


## Purpose-orientated UI

The guided application flow uses graphics, text information and selection options to ensure the perfect job results.



## Easy Home screen customisation



Users can rearrange the icons by pressing and holding on an icon and dragging and dropping it into a different position. Icons in the function list can also be added and removed to meet customer requirements.



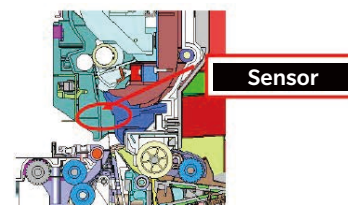
## High Speed Performance

The new i-Series is our fastest ever range, boosting workflow and cutting out waiting time. In fact, thanks to its brand new 4 Core CPU.

The new controller integrates all processes and distributes tasks more effectively within the Central Processing Unit. As a result, the user experience is smoother and quicker and there is no waiting time while operating the i-Series.

## Intelligent Media Sensor

Optical and ultrasonic sensors automatically detect paper type (weight) and automatically make the correct media setting, which can reduce misfeeds and help optimize print quality. This unique feature provides uninterrupted use and increasing productivity.



## Double - feed Detection Sensor

- The Double-feed Detection Sensor automatically detects overlapped sheets and displays an alert on the operation panel.
- Simply follow the instructions on the panel to resume scanning from wherever you were interrupted.

## Protect data from external threats (\*i-option LK-116 is required)

One of the hidden IT security threat is from multifunction printers. Our optional BitDefender® anti-virus engine automatically scans all transmitted and received data – in real time. You can also run on-demand or scheduled scanning of your data, to make sure you stay protected.



## AIR CLEANING UNITS CU-102

(\*optional item CU-102 is required)

The Air Cleaning Units are attached to the outside of the office system and provide an efficient solution for A3/A4 models. The filter solutions were specifically designed for the Konica Minolta product portfolio to prevent any unwanted side effects. Regular tests ensure an effectivity of more than 90% for CU-102 units. Additionally, the possibility of air emissions escaping through other parts of the printer was eliminated by a thorough assessment of the casing.



The Air Cleaning Units are active filter solutions. They consist of a filter and fan unit that is combined with a dedicated air duct. The filter unit is powered by two fans that actively suck the air out of the office system. The fans are only active during the printing process and guarantee an optimized air flow. The air duct helps direct the air stream from the highest emission outlets of the printing device, e.g. the fusing unit section, to the filter unit. Any risks of overheating or emissions escaping through other parts of the office system have been eliminated.

## Dispatcher Paragon

Increases productivity and flexibility while reducing printing and copying costs. It also offers sophisticated enterprise print management capabilities, including secure and central control for your entire print environment.

Authentication

Reporting

Print Roaming®

Rule-based Engine

Credit and Billing

Mobile Print

## Dispatcher Phoenix

Our advanced process automation solution streamlines the handling of all document-processing tasks. This simplifies daily office routines to boost efficiency thanks to predefined workflow templates and customizable scan workflows.

It also facilitates the easy distribution of documents by scanning to SharePoint and Dropbox or to popular systems like Box, Google Drive, Microsoft OneDrive, and OneDrive for Business.

## Product design

i-Series adopts the modern and intuitive design with the 'Intelligent Connected Workplace' approach to address the market needs. It has won one of the world's most prestigious design awards, the Red Dot Award 2020, in the category of Product Design.



## Benefits at a glance

- 10.1" tablet-like display for A3 and A4 series
- Simple design with intuitive handling and vibration feedback
- Identical list view for all functionalities
- 24-90° UI tilt angle for easy handling
- Choose between 4 types of interface
- UI customization and personalization
- Guided support for functions, paper jam and handling problems
- Protect data from external threats

## OPTIONS

### 1 ENHANCED FEATURES

- PDF enhancements  
LK-102v3
- OCR text recognition  
LK-105v4
- Barcode fonts  
LK-106
- Unicode fonts  
LK-107
- OCR A and B fonts  
LK-108
- Document converter pack  
LK-110v2
- ThinPrint® client  
LK-111
- Serverless pull printing  
LK-114
- Antivirus  
LK-116



### 2 CONNECTIVITY

- Fax board  
FK-514 x2
- Wireless LAN  
UK-221
- USB I/F kit  
EK-608
- USB I/F kit  
EK-609 OR
- Biometric authentication  
AU-102 OR
- ID card reader
- Mount kit  
MK-735

#### LEGEND

- Mandatory option
- Option
- This option can only be installed with the respective option above it

### 3 OTHERS

- Working table  
WT-506
- 10-Key pad  
KP-102
- Security kit  
SC-509
- Keyboard holder  
KH-102
- Air cleaning unit  
CU-102

### 4 MEDIA INPUT

- 2x Universal tray  
PC-216 OR
- Large capacity tray  
PC-416
- Large capacity tray  
LU-302 OR
- Large capacity tray  
LU-207

### 5 MEDIA OUTPUT

- |  |   |   |   |
|--|---|---|---|
| <ul style="list-style-type: none"> <li>Output tray<br/>OT-513 <span>OR</span></li> <li>Job separator<br/>JS-508 <span>OR</span></li> </ul> | <ul style="list-style-type: none"> <li>Inner finisher<br/>FS-533 <span>OR</span></li> <li>Attachment kit<br/>MK-607</li> <li>Punch kit for FS-533<br/>PK-519</li> </ul> | <ul style="list-style-type: none"> <li>Staple finisher<br/>FS-539 <span>OR</span></li> <li>Relay unit<br/>RU-513 <span>OR</span></li> <li>Booklet finisher<br/>FS-539SD <span>OR</span></li> <li>Relay unit<br/>RU-513</li> <li>Punch kit for FS-539/SD<br/>PK-524</li> </ul> | <ul style="list-style-type: none"> <li>Staple finisher<br/>FS-540 <span>OR</span></li> <li>Relay unit<br/>RU-513 <span>OR</span></li> <li>Booklet finisher<br/>FS-540SD <span>OR</span></li> <li>Relay unit<br/>RU-513</li> <li>Punch kit for FS-540/SD<br/>PK-526</li> <li>Post inserter for FS-540/SD<br/>PI-507 <span>OR</span></li> <li>Job separator for FS-540/SD<br/>JS-602</li> <li>Z-fold unit for FS-540/SD<br/>ZU-609</li> </ul> |
|--|---|---|---|



## TECHNICAL SPECIFICATIONS

### SYSTEM SPECIFICATIONS

System speed A4	Up to 45/45 ppm (mono/colour)
System speed A3	Up to 22/22 ppm (mono/colour)
Autoduplex speed A4	Up to 45/45 ppm (mono/colour)
1st page out time A4	3.8/5.0 sec. (mono/colour) <sup>1</sup>
Warm-up time	Approx. 15/17 sec. (mono/colour) <sup>1</sup>
Imaging technology	Laser
Toner technology	Simitri® HD polymerised toner
Panel size/resolution	10.1" / 1024 x 600
System memory	8,192 MB (standard/max)
System hard drive	256 GB SSD (standard) / 1 TB SSD (optional)
Interface	10/100/1,000-Base-T Ethernet; USB 2.0; Wi-Fi 802.11 b/g/n/ac (optional)
Network protocols	TCP/IP (IPv4 / IPv6); SMB; LPD; IPP; SNMP; HTTP(S); Bonjour
Automatic document feeder	Up to 300 originals; A6-A3; 35-210 g/m <sup>2</sup> ; Dualscan ADF
ADF double feed detection	Standard
Printable paper size	A6-SRA3; customized paper sizes; banner paper max. 1,200 x 297 mm
Printable paper weight	52-300 g/m <sup>2</sup>
Paper input capacity	1,150 sheets / 6,650 sheets (standard/max)
Paper tray input (standard)	1x 500; A6-A3; custom sizes; 52-256 g/m <sup>2</sup> 1x 500; A5-SRA3; custom sizes; 52-256 g/m <sup>2</sup>
Paper tray input (optional)	1x 500 sheets; A5-A3; 52-256 g/m <sup>2</sup> 2x 500 sheets; A5-A3; 52-256 g/m <sup>2</sup> 1x 2,500 sheets; A4; 52-256 g/m <sup>2</sup> 1x 1,500 + 1x 1,000 sheets; A5-A4; 52-256 g/m <sup>2</sup>

### PRINTER SPECIFICATIONS

Print resolution	1,800 (equivalent) x 600 dpi; 1200 x 1200 dpi
Page description language	PCL 6 (XL3.0); PCL 5c; PostScript 3 (CPSI 3016); XPS
Operating systems	Windows 7 (32/64); Windows 8.1 (32/64); Windows 10 (32/64); Windows Server 2008 (32/64); Windows Server 2008 R2; Windows Server 2012; Windows Server 2012 R2; Windows Server 2016; Windows Server 2019; Macintosh OS X 10.10 or later; Unix; Linux; Citrix
Printer fonts	80 PCL Latin; 137 PostScript 3 Emulation Latin
Mobile printing	AirPrint (iOS); Mopria (Android); Konica Minolta Print Service (Android); Konica Minolta Mobile Print (iOS/Android) optional: WiFi Direct

### PRINTER SPECIFICATIONS (OPTIONAL)

Controller CPU	AMD GX-424CC @ 2.4 GHz
Memory/HDD	4,096 MB / 500 GB
Page description language	Adobe PostScript 3 (CPSI 3020); PCL 6; PCL 5c
Operating systems	Windows 7 (32/64); Windows 8.1 (32/64); Windows 10 (32/64); Windows Server 2008 (32/64); Windows Server 2008 R2; Windows Server 2012; Windows Server 2012 R2; Windows Server 2016; Windows Server 2019; Macintosh OS X 10.10 or later; Linux

### SCANNER SPECIFICATIONS

Scan speed	Up to 140/140 ipm in simplex (mono/colour) Up to 280/280 ipm in duplex (mono/colour)
Scan resolution	Up to 600 x 600 dpi
Scan modes	Scan-to-eMail (Scan-to-Me); Scan-to-SMB (Scan-to-Home); Scan-to-FTP; Scan-to-Box; Scan-to-USB; Scan-to-WebDAV; Scan-to-DPWS; Scan-to-URL; TWAIN scan
File formats	JPEG; TIFF; PDF; Compact PDF; Encrypted PDF; XPS; Compact XPS; PPTX optional: Searchable PDF; PDF/A 1a and 1b; Searchable DOCX/PPTX/XLSX
Scan destinations	2,000 destinations + 100 groups; LDAP support

### SYSTEM SPECIFICATIONS

Large capacity tray (optional)	1x 3,000; A4; 52-256 g/m <sup>2</sup> 1x 2,500; A4-SRA3; custom sizes; 52-256 g/m <sup>2</sup>
Manual bypass	150 sheets; A6-SRA3; custom sizes; banner; 60-300 g/m <sup>2</sup>
Finishing modes (optional)	Offset; Group; Sort; Staple; Staple (offline); Punch; Half-fold; Letter-fold; Booklet; Post insertion; Z-fold
Automatic duplexing	A6-SRA3; 52-256 g/m <sup>2</sup>
Output capacity	Up to 250 sheets / up to 3,300 sheets (standard/max)
Stapling	Max. 100 sheets or 98 sheets + 2 cover sheets (up to 300 g/m <sup>2</sup> )
Stapling output capacity	Max. 200 sets
Letter fold	Max. 3 sheets
Letter fold capacity	Max. 50 sets; unlimited (without tray)
Booklet	Max. 20 sheets or 19 sheets + 1 cover sheet (up to 300 g/m <sup>2</sup> )
Booklet output capacity	Max. 35 booklets; unlimited (without tray)
Power consumption	220-240 V / 50/60 Hz; Less than 1.58 kW
System dimension (W x D x H)	615 x 688 x 961 mm (without options)
System weight	Approx. 100.0 kg (without options)

### COPIER SPECIFICATIONS

Copy resolution	600 x 600 dpi
Gradation	256 gradations
Multicopy	1-9,999
Original format	Max. A3
Magnification	25-400% in 0.1% steps; Auto-zooming

### FAX SPECIFICATIONS

Fax standard	Super G3 (optional)
Fax transmission	Analogue; i-Fax; Colour i-Fax; IP-Fax
Fax resolution	Up to 600 x 600 dpi
Fax compression	MH; MR; MMR; JBIG
Fax modem	Up to 33.6 Kbps
Fax destinations	2,000 single + 100 groups

### USER BOX SPECIFICATIONS

Storable documents	Up to 3,000 documents or 10,000 pages
Type of user boxes	Public; Personal (with password or authentication); Group (with authentication)
Type of system boxes	Secure print; Encrypted PDF print; Fax receipt; Fax polling

### SYSTEM FEATURES

Accounting	Up to 1,000 user accounts; Active Directory support (user name + password + e-mail + smb folder); User function access definition; Authentication by mobile device (Android) optional: Biometric authentication (finger vein scanner); ID card authentication (ID card reader); Authentication by mobile device (iOS)
Software	Net Care Device Manager; Data Administrator; Box Operator; Web Connection; Print Status Notifier; Driver Packaging Utility; Log Management Utility

<sup>1</sup> Warm-up time may vary depending on the operating environment and usage

- All specifications refer to A4-size paper of 80 g/m<sup>2</sup> quality.
- The support and availability of the listed specifications and functionalities varies depending on operating systems, applications and network protocols as well as network and system configurations.
- The stated life expectancy of each consumable is based on specific operating conditions such as page coverage for a particular page size (5% coverage of A4). The actual life of each consumable will vary depending on use and other printing variables including page coverage, page size, media type, continuous or intermittent printing, ambient temperature and humidity.
- Some of the product illustrations contain optional accessories.
- Specifications and accessories are based on the information available at the time of printing and are subject to change without notice.
- Konica Minolta does not warrant that any specifications mentioned will be error-free.
- All brand and product names may be registered trademarks or trademarks of their respective holders and are hereby acknowledged.

## DESCRIPTION

### ENHANCED FEATURES

LK-102v3 PDF enhancements	PDF/A(1b), PDF encryption, digital signature
LK-105v4 OCR text recognition	Searchable PDF and PPTX
LK-106 Barcode fonts	Supports native barcode printing
LK-107 Unicode fonts	Supports native Unicode printing
LK-108 OCR A and B fonts	Supports native OCR A and B font printing
LK-110v2 Document converter pack	Generates various file formats incl. DOCX, XLSX and PDF/A
LK-114 Serverless pull printing	Secure and Follow Me printing solution requiring no server application
LK-116 Antivirus	Bitdefender® antivirus provides real time scanning of all incoming and outgoing data

### CONNECTIVITY

FK-514 Fax board	Super G3 fax, digital fax functionality
UK-221 Wireless LAN	Wireless LAN and wireless LAN Access Point Mode
EK-608 USB I/F kit	USB keyboard connection
EK-609 USB I/F kit	USB keyboard connection; Bluetooth
AU-102 Biometric authentication	Finger vein scanner
ID card reader	Various ID card technologies
MK-735 Mount kit	Installation kit for ID card reader

### OTHERS

WT-506 Working table	Authentication device placement
KP-102 10-Key pad	For use instead of touchscreen
SC-509 Security kit	Copy guard function
EM-908 Replacement SSD	1 TB SSD to increase storage space
KH-102 Keyboard holder	To place USB keyboard
CU-102 Air cleaning unit	Improving indoor air quality by reduced emission

### MEDIA INPUT

PC-216 2x Universal tray	2x 500 sheets, A5-A3, 52-256 g/m <sup>2</sup>
PC-416 Large capacity tray	2,500 sheets, A4, 52-256 g/m <sup>2</sup>
LU-302 Large capacity tray	3,000 sheets, A4, 52-256 g/m <sup>2</sup>
LU-207 Large capacity tray	2,500 sheets, A4-SRA3, 52-256 g/m <sup>2</sup>

### MEDIA OUTPUT

OT-513 Output tray	Output tray used instead of finisher
JS-508 Job separator	Separation of fax output; etc.
FS-533 Inner finisher	50-sheet stapling, 500 sheets max. output
MK-607 Attachment kit	For FS-533 installation
PK-519 Punch kit for FS-533	2/4 hole punching, autoswitching
FS-539 Staple finisher	50 sheets stapling; 3,200 sheets max. output
FS-539SD Booklet finisher	50 sheets stapling; 20 sheets booklet finisher; 2,200 sheets max. output
PK-524 Punch kit for FS-539/SD	2/4 hole punching; autoswitching
FS-540 Staple finisher	100 sheets stapling; 3,200 sheets max. output
FS-540SD Booklet finisher	100 sheets stapling; 20 sheets booklet finisher; 2,700 sheets max. output
PK-526 Punch kit for FS-540/SD	2/4 hole punching; autoswitching
RU-513 Relay unit	For FS-539/SD or FS-540/SD installation
JS-602 Job separator for FS-540/SD	Separation of fax output; etc.
PI-507 Post inserter for FS-540/SD	Cover insertion; post finishing
ZU-609 Z-fold unit for FS-540/SD	Z-fold for A3 prints

# bizhub C450i

**Simitri HD**  
High Definition Polymerized Toner

**Simitri**  
with Biomass

**SAP**® Printer Vendor Solution

**CORTADO**



<https://www.konicaminolta.hk/hk/en-us/product-category/1/digital-multi-functional-system>

Product appearance, configuration and/or specifications are subject to change without notice.

This product is not available for some countries or regions.

KONICA MINOLTA, the KONICA MINOLTA logo, symbol mark, Giving Shape to Ideas, bizhub, INFO-Palette, i-Option and Konica Minolta Optimised Print Services and their respective logos are registered trademarks or trademarks of KONICA MINOLTA, INC. Evernote is a registered trademark or trademark of Evernote Corporation. Android, Google Drive, Gmail, Google Play and Google Cloud Print are registered trademarks or trademarks of Google Inc. in the U.S. and other countries. Mac OS, iPhone, iPad, App Store and AirPrint are registered trademarks or trademarks of Apple Inc. in the U.S. and other countries. iOS is a registered trademark or trademark of Cisco in the U.S. and other countries. Mopria is a registered trademark or trademark of Mopria Alliance Inc. NFC is a registered trademark or trademark of the NFC Forum. All other brands and product names are registered trademarks or trademarks of their respective companies or organisations.



MKT-2005-736

### Konica Minolta Business Solutions (HK) Limited

Room 208, 2/F, Eastern Centre, 1065 King's Road, Quarry Bay, Hong Kong  
Hotline: (852) 2565 2111



i-Series **Search**