



KONICA MINOLTA

AccurioPress  
C14000/C12000

# GO FOR AUTOMATED QUALITY & HIGHEST PRODUCTIVITY

RETHINK GRAPHICAL COMMUNICATION



Giving Shape to Ideas

# SMART FACTORY PRINTING



The digital revolution continues; and in the outstanding development history of Production Printing products at Konica Minolta, the AccurioPress C14000 and C12000 are the masterpieces of the next generation. The new flagship models distinguish themselves with unprecedented print quality, amazing media flexibility and the highest degree of automation. With their speed of up to 140 ppm (up to 120 ppm for the C12000), the AccurioPress C14000 and C12000 simply do the job, day after day – printing with consistency, reliability, ease and efficiency on a wide array of media. Their exclusive toner closes the gap between digital and offset printing quality; and in combination with features such as automatic quality setup, monitoring and adjustments on the fly, a unique inspection system as well as automated colour control, the AccurioPress C14000 series reduces turnaround times to a new minimum.



Grow your business



Boost your operational efficiency



Maximise your investment



Improve customer loyalty



Automation and time savings like never before

## STATE-OF-THE-ART-PRINT-SERVER RETHINK PRODUCTION PRINTING

### IC-610 KONICA MINOLTA OWN CONTROLLER

The Konica Minolta IC-610 print controller comes with powerful workflow benefits – including 2,400 x 3,600 equiv. dpi printing at full rated engine speed, high-speed RIP processing, enhanced accuracy in colour reproduction, various colour management functions as well as full compatibility with print engine on-board job control and editing functions.

### IC-318 EFI FIERY CONTROLLER

Reduce labour costs, cut turnaround times, and minimize errors and paper waste with the advanced job management and workflow automation that the Fiere® IC-318 provides. Streamline your job layout with the Fiere’s instant visual preview and advanced make ready capabilities. What’s more, supporting industry-leading variable data printing (VDP) formats, the Fiere also produces personalized short-run jobs profitably.

### IC-319 EFI FIERY CONTROLLER

The top-of-the-line Fiere® IC-319 will improve your bottom line with best-in-class processing, outstanding colour and time-saving workflows. If you want the best out-of-the-box colour consistency and accuracy with powerful colour matching, profiling, and automated calibration, look no further! With EFI™ management information systems and web-to print solutions, the IC-319 eliminates touch points and optimizes production; plus it integrates with industry-leading prepress workflow solutions.

## TAKE LEADERSHIP AND RESPONSIBILITY RETHINK TOMORROWS BUSINESS

### MADE YOUR BUSINESS

#### Commercial printers

Growing your business and getting the maximum out of your investment is what the AccurioPress C14000 series promises. The high speed, high productivity and high uptime help you achieve shortest turnaround times. Combined with great media flexibility with stocks of up to 450 g/m<sup>2</sup>, banners, envelopes and structured papers, you further enhance the offerings of your print shop. Colour quality issues are a thing of the past, as these presses offer a wide range of tools to control and adjust themselves; on top an inspection system can be applied to make sure that from now on, only impeccable prints will leave your shop.

#### CRDs

AccurioPress C14000 / C12000 support the highest degree of automation and yet also ensure high-level quality. Professional inline finishing produces ready-made print products at the click of a finger; and the Intelligent Quality Optimiser Unit makes sure that the print quality is automatically set up, monitored and corrected. Their versatile media flexibility and high productivity make AccurioPress C14000 and C12000 a solid and lucrative investment for the future.

## DESIGN FOR OUR PLANET

Konica Minolta promotes sustainable development and integrates environmental and social perspectives into its business strategies. You can rely on Konica Minolta products to underpin your green strategy to build your business.

Committed to help prevent global warming, Konica Minolta strives to reduce CO<sub>2</sub> emissions during product manufacture, product distribution, at the sales stage, and during product use – with even stricter targets than demanded by the Kyoto Protocol. Enabling carbon neutrality, Konica Minolta offers its customers the offset of unavoidable CO<sub>2</sub> emissions for production printing. Together with the experts from Climate Partner, Konica Minolta proposes a new and profound eco concept for our professional production presses.



# YOUR ADVANTAGES WITH THE AccurioPress C14000/C12000

## RETHINK PRODUCTION PRINTING

### READY-MADE PRINT PRODUCTS

- 50-sheet booklet making with front trimming and optional creasing, slitting and spine corner forming
- Perfect binding for books of up to 30 mm
- 100-sheet stapling with cutting mechanism
- 102-sheet auto ring binding
- Automated inline business card and postcard cutting
- Full bleed banners, A3 and A4 posters

### DURABLE PERFORMANCE

#### AccurioPress C14000

- Duty Cycle 2.5 million prints
- Up to 140 A4 pages per minute
- Up to 80 A3 pages per minute

#### AccurioPress C12000

- Duty Cycle 2.2 million prints
- Up to 120 A4 pages per minute
- Up to 69 A3 pages per minute

### HIGHEST RELIABILITY

- Long-life platform, long-lasting parts and consumables
- Accurate front to back registration
- Fusing-rolling mechanism
- For prints with maximum efficiency
- For lucrative short-run printing

### GEARED-UP FINISHING

- Multi (GBC) punching and 2- & 4-hole punching
- 6 different types of folding
- 3<sup>rd</sup> - party Products
- Large-capacity stacking



### SIMPLY EFFICIENT

- Automated engine linearisation
- Automated duplex registration
- Automated profiling
- Real-time adjustments
- Purge function

## HIGH-END PRINT CONTROL

- Flexible choice of controller technology: EFI® or proprietary Konica Minolta controller
- Integration into hybrid workflows

## EASE OF USE

- Simple paper catalogue settings
- Operator Replaceable Parts
- Auto Inspection Technology

## SOPHISTICATED MEDIA HANDLING

- Automatic media recognition
- Air-suction feeding technology
- Up to 14,140 sheets paper input capacity
- Up to 10 paper input trays

## COMPREHENSIVE MEDIA PROCESSING

- Up to 450 g/m<sup>2</sup> paper weight in simplex and duplex printing
- Long sheet size of up to 1,300mm (duplex up to 900mm )
- Reliable thin paper feeding through air-blow fusing separation
- Envelope printing
- Embossed paper support
- Optional inter-cooler curl eliminator

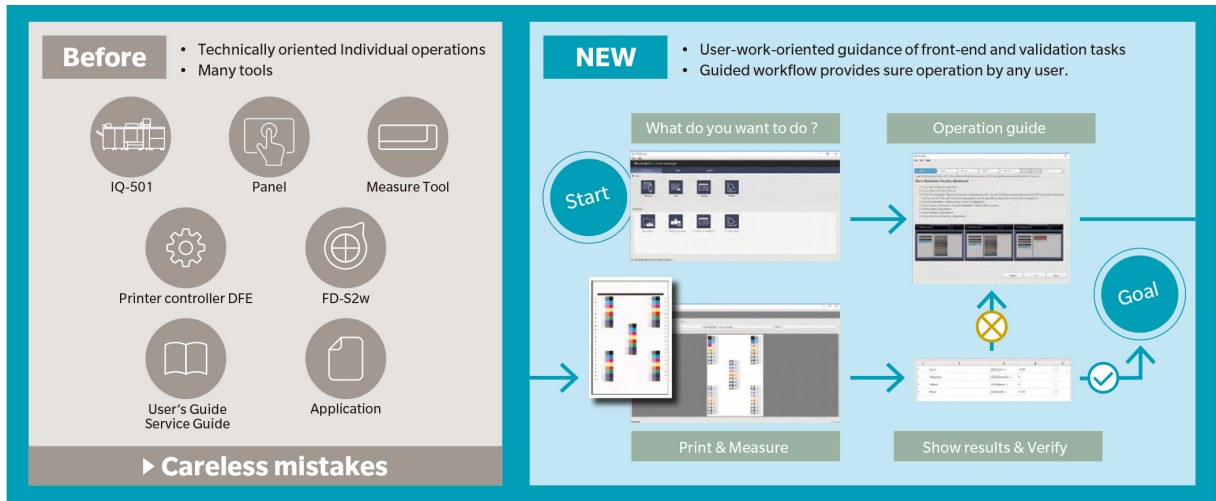
## PERFECT IMAGE QUALITY

- S.E.A.D. X  
2,400 x 3,600 equiv. dpi x 8bit
- Simitri V toner technology
- Image density control technology

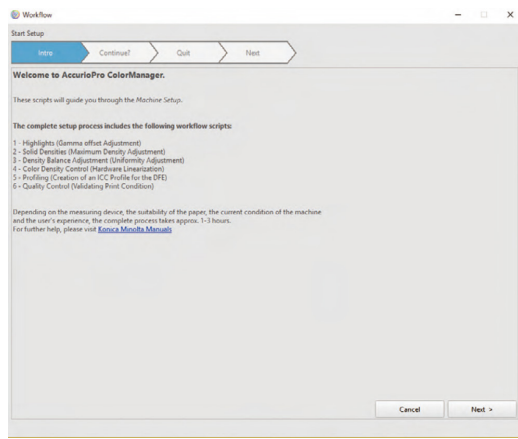


# EASY-TO-USE COLOUR MANAGEMENT SOLUTION THAT MEETS EVERY DEMAND

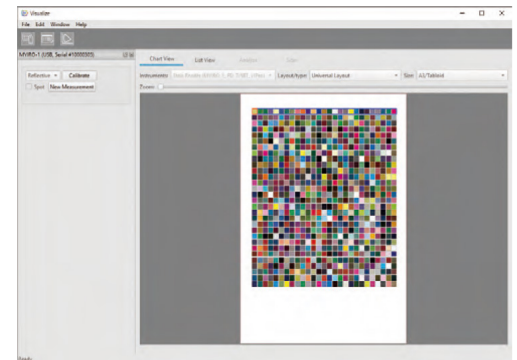
Streamline your colour management with the AccurioPro Color Manager (APCM). The APCM Suite is a combination of tools to linearise, profile, validate and control the colour quality of your printing presses. Maximise the throughput of your fleet; and increase the efficiency of your print room with the APCM's straightforward operation and streamlined processes.



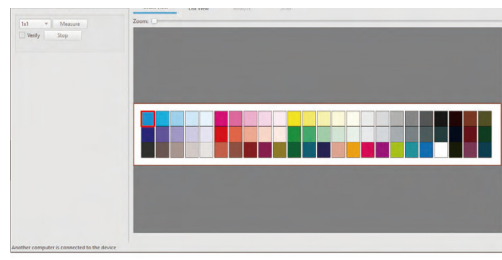
## BASIC ENGINE SETUP OR LINEARISATION



## PROFILING



## QUALITY CONTROL



## GAMUT CHECK

**STATUS:** ✓

Measurement File: 7 - Dmax\_0010.mdl  
Criteria Name: Dmax - Mondurml

No.	Criteria	Notation	Result	Status
1	Cyan	$\Delta D(\text{Cyan})$	0.02	←   █   ⊙
2	Magenta	$\Delta D(\text{Magenta})$	0.01	⊙   █   ⊙
3	Yellow	$\Delta D(\text{Yellow})$	0.01	⊙   █   ⊙
4	Black	$\Delta D(\text{Black})$	0.00	⊙   █   ⊙

OK

# DESIGNED TO WORK IN PERFECT HARMONY

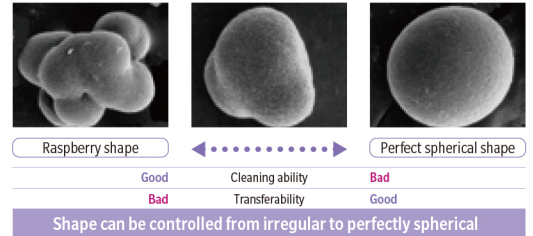
with Konica Minolta's AccurioPress C14000/C12000



## THE PERFECT SHAPE

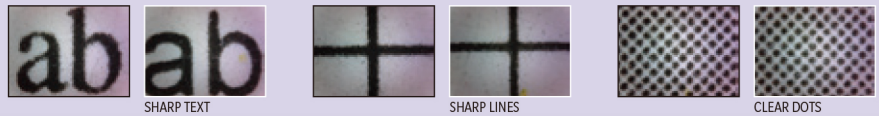
A toner that achieves the highest quality while meeting the needs of printing businesses for low maintenance and high speed, Simitri V was developed using cutting-edge shaping technology. Konica Minolta's new method can create toner particles in any form from raspberry to perfect sphere, enabling researchers to find the ideal shape that keeps the inside of your AccurioPress clean, even after the longest high-speed print runs. And on top of all that, the image quality is stunning.

Toner Particle Shapes (SEM photos)

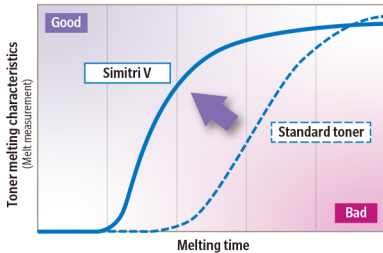


## Comparison of Printed Materials

Conventional machine  
AccurioPress C14000/C12000



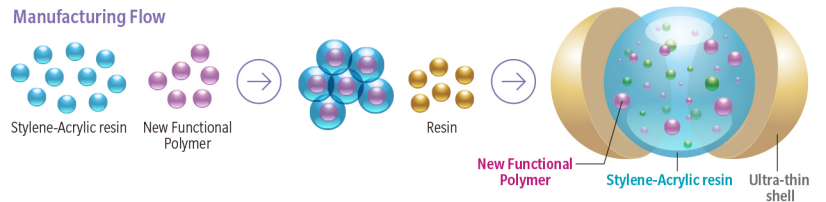
## Low Temperature Fixability



## FORMULATED FOR IDEAL PERFORMANCE

Simitri V works at speed, while staying stable in storage and maintaining print quality. These qualities call for materials that go the extra mile. The toner is formulated using a new functional polymer that fuses at a lower temperature than ever before. Incorporating this new polymer required Konica Minolta to rethink how toner is made, combining the ingredients through a new process. Thanks to the new formula, Simitri V is capable of printing on a wider range of media than ever before, maintaining its high-speed adherence even on paper up to 450 gsm.

## Manufacturing Flow



## GREEN IS MORE THAN A COLOUR

With its significantly lower melt-point and fast-action formula, Simitri V toner makes significant energy savings. However, toner isn't only impacting the environment when it's inside the printing press. The manufacturing process for Simitri V uses 25% less water than conventional toner, and once your printed materials have reached the end of their

life, the paper they are attached to can be recycled more easily, thanks to Simitri V's high compatibility with toner-removal methods during paper recycling. Konica Minolta has a responsibility to engineer production print solutions that reduce impact on the environment without sacrificing quality.

# TECHNICAL SPECIFICATIONS

## RETHINK PRODUCTION PRINTING

### SYSTEM SPECIFICATIONS

Resolution	2,400 x 3,600 equiv. dpi x 8 bit
Paper weight	52 - 450 g/m <sup>2</sup>
Duplex unit	Non-stack type; 52 - 450 g/m <sup>2</sup>
Paper sizes (max.)	330.2 x 487.7 mm 330.2 x 900 mm (max. duplex) 330.2 x 1300 mm (max. simplex)
Paper input capacity	14,140 sheets
Main unit dimensions (W x D x H)	1,151 x 932 x 1,620 mm
Main unit weight	560 kg

### PRODUCTIVITY

<b>AccurioPress C14000</b>	
A4 - max. per minute	140 ppm
A3 - max. per minute	80 ppm
A4 - max. per hour	7,981 pph
<b>AccurioPress C12000</b>	
A4 - max. per minute	120 ppm
A3 - max. per minute	69 ppm
A4 - max. per hour	6,832 pph

### ACCESSORIES

KM image controller	IC-610
EFI external image controller	IC-318
EFI external image controller	IC-319
Paper Feeder Unit with Scanner	PF-712
Paper Feeder Unit	PF-713
Feeder adjuster kit	FA-505
Multi Bypass Tray	MB-511
Banner Tray Unit (Input)	MK-760
Conveyance Unit	RU-518
Humidifier	HM-103
Intelligent Quality Optimizer	IQ-501
Purge Unit	RU-702
Auto Inspection Unit	UK-301

Output Tray Unit	OT-512
Banner Tray Unit (Output)	MK-761
3rd party Interface	MK-737
Relay Unit	RU-510
Stapling Unit	FS-541
Saddle Stitcher kit	SD-510
Punch kit	PK-525
Mount Kit	MK-732
PostInserter kit	PI-502
Folding and Punching Unit	FD-503
Booklet making Unit	SD-506
Booklet making Unit	SD-513
Folding kit	FD-504
Trimmer kit	TU-503
Creaser kit	CR-101
Stacking Unit	LS-507
Handcart	LC-502
Perfect Binding Unit	PB-503
Trimmer Unit	TU-510
Creaser kit	CR-102
Trimmer kit	TU-504
Banner kit	MK-764
Job Separator kit	JS-507
GBC Binding Unit	G1
GBC Punching Unit	G3

- All specifications refer to A4-size paper of 80 g/m<sup>2</sup> quality.
- The support and availability of the listed specifications and functionalities varies depending on operating systems, applications and network protocols as well as network and system configurations.
- The stated life expectancy of each consumable is based on specific operating conditions such as page coverage for a particular page size (5% coverage of A4). The actual life of each consumable will vary depending on use and other printing variables including page coverage, page size, media type, continuous or intermittent printing, ambient temperature and humidity.
- Some of the product illustrations contain optional accessories.
- Specifications and accessories are based on the information available at the time of printing and are subject to change without notice.
- Konica Minolta does not warrant that any prices or specifications mentioned will be error-free.
- All brand and product names may be registered trademarks or trademarks of their respective holders and are hereby acknowledged.

## AccurioPress C14000/C12000

<https://www-org-hk.konicaminolta.com/hk/en-us/product-item/1-3/>

Product appearance, configuration and/or specifications are subject to change without notice. This product is not available for some countries or regions.

KONICA MINOLTA, symbol mark, Giving Shape to Ideas, bizhub, Konica Minolta Optimised Print Services logo and bizhub SECURE logo are registered trademarks or trademarks of KONICA MINOLTA, INC. Android, Google, and Google Cloud Print are registered trademarks or trademarks of Google Inc. in the U.S. and other countries. Mac and App Store are registered trademarks or trademarks of Apple Inc. in the U.S. and other countries. iOS is a registered trademark or trademark of Cisco Systems, Inc. in the U.S. and other countries. Mopria and Mopria logo are registered trademarks or trademarks of Mopria Alliance Inc. Bluetooth is a registered trademark or trademark of Bluetooth SIG, Inc. Wi-Fi is a registered trademark or trademark of Wi-Fi Alliance. Microsoft Store, Windows Mobile and Power Point are registered trademarks or trademarks of Microsoft Corporation in the U.S. or other countries. Bitdefender logo is a registered trademark or trademark of Bitdefender IPR Management Ltd. All other brands and product names are registered trademarks or trademarks of their respective companies or organisations.



From consulting, system design, to operations, Konica Minolta offers total support to optimise your office output environment.  
<https://www.konicaminolta.com/hk/en-us/digital-office-detail/34-48-166/>



#### Requirements for safe use

- Please read and follow the instruction manual to ensure safe operation.
- Only operate using appropriate power supply and voltage.
- Connecting the earth wire to an inappropriate place may cause explosion or electric shock. Please connect accordingly (Taiwan and the Philippines only).



MKT-2111-835

### Konica Minolta Business Solutions (HK) Limited

Room 208, 2/F, Eastern Centre, 1065 King's Road, Quarry Bay, Hong Kong  
 Hotline: (852) 2565 8181



Konica Minolta Hong Kong



Konica Minolta Business Solutions Hong Kong

AccurioPress