



KONICA MINOLTA

AccurioLabel 230

Full Colour Label Printing System



Giving Shape to Ideas

A digital label printing system that offers enhanced productivity, job flexibility, operability and excellent image quality with affordable system cost, is a "Perfect Fit" for business expansion and parallel use with existing analogue presses.

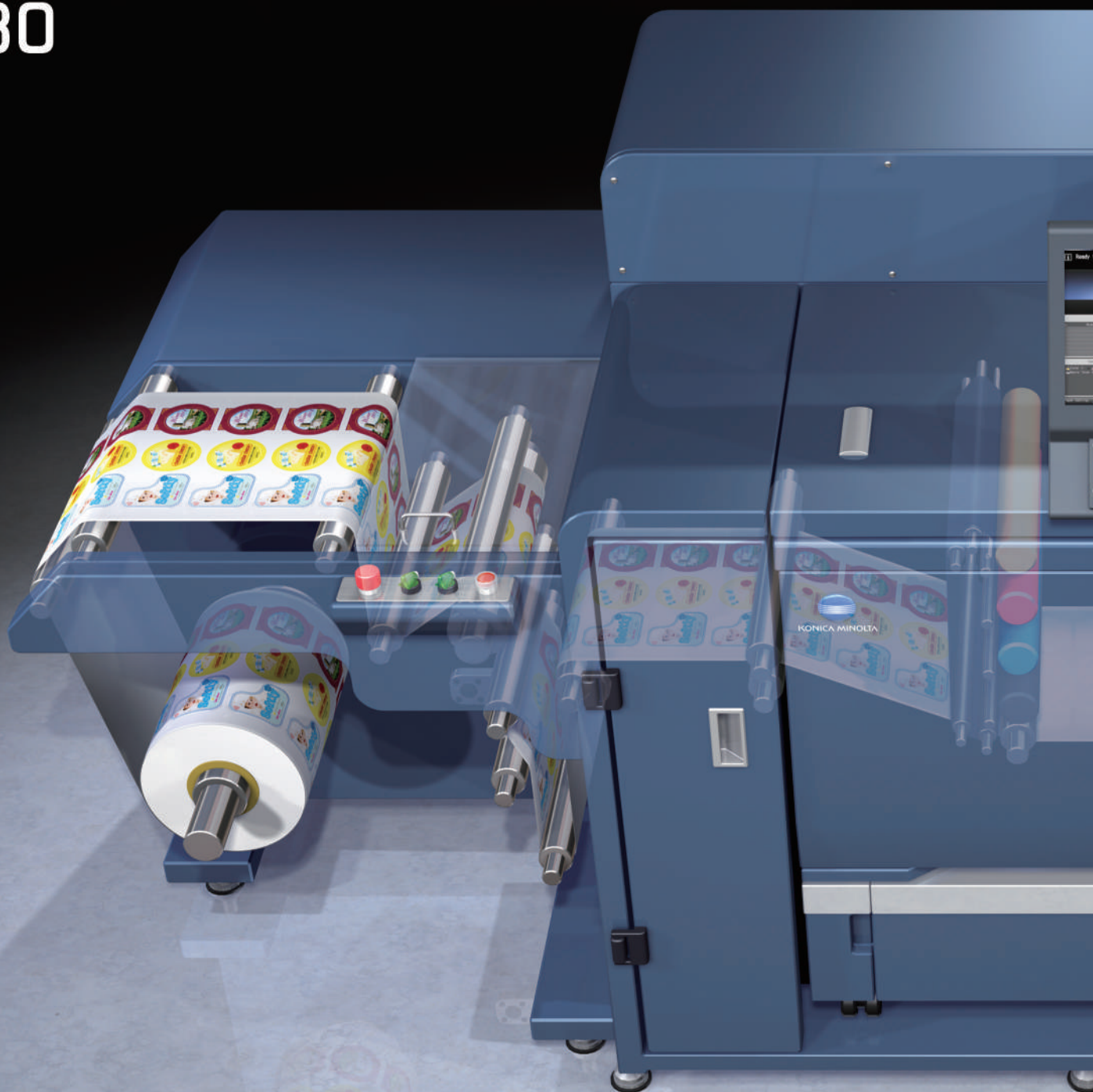
AccurioLabel 230

QUALITY

FLEXIBILITY

Perfect Fit

PRODUCTIVITY



High performance in compact system

- High productivity with maximum print speed of 23.4 m/min.
- Excellent image quality to meet a wide range of diversifying needs.
- Wide media compatibility without pre-treatment.
- Small foot print.
- Outstanding operability.
- Sophisticated colour management features.
- Superb colour stability.



Digital Label Printing

Merits of introducing digital printing

Print jobs of various kinds and short-run jobs are increasing compared to long-run jobs of the past and printers are required to cope with orders with a quick turnaround. Taking advantage of the flexibility of digital printing, these orders that are difficult to handle with analogue printing press can now be handled efficiently. In addition, values can be added to the print product using VDP or numbering, which helps differentiate the user among ever-diversifying market needs.

Difficulties with analogue press

Preparatory work including colour adjustment and ink cleaning, etc. is required.

- 1 ▶ Printing plate needs to be changed for each print job.
- 2 ▶ Substantial print wastage results from trial print run. (especially roll-fed press.)
- 3 ▶ Expertise and skillful operator are required.

Merits of digital press

Print data can be directly output from PC

- 1 ▶ Preparatory work only such as paper replacement or colour adjustment can be performed as required.
- 2 ▶ Stable quality is ensured from the first sheet of the job onwards, reducing print wastage.
- 3 ▶ Simply follow the output or maintenance instructions displayed on the screen.

Digital Label Printer AccurioLabel 230 with its superb productivity, image quality and operability as well as its economical features is ideal for those wishing gain a foothold in the label market and requiring parallel use with existing analogue presses.

Digital printing applications

Small lot label printing

Label for local products

Label design sample printing

Label for event or special occasion

Label with variable data printing

Personalised label





Applications realised by AccurioLabel 230 to meet a wide range of diversifying needs.

Thin line expression

Thin lines in complex line images are also faithfully reproduced by the edge treatment function.



Solid density

Solid black areas with high image density can be expressed with a suitable glossy appearance.

Photographic image quality

Realisation of stable, high image quality by multi-gradation data processing and an expansive colour gamut.

Gradations

Abundance of gradation expressions to achieve a natural finish.



Variable data printing

Content can be changed for each sheet, effective for lot number changes or creation of original labels, for example.



Barcode printing

Small barcodes can also be printed without blurring. Variable barcodes can also be printed.



Small point characters

Small characters are also vividly printed to ensure ease of reading.



Reproduction of skin-tone

Roughness of the skin can be suppressed to reproduce richly-textured human skin tones.

Enhanced Productivity & Flexibility

To meet demands of digital printing business such as shorter turnaround and expansion of print application, AccurioLabel 230 improves overall productivity and job acceptability especially overprinting capability on pre-printed transparency or coloured media.

Enhanced productivity

Fast print speed up to 23.4m/min.

Most of tack papers and tack films can be printed with the maximum print speed of 23.4m/min. The print speed enhanced from previous model realises faster turnaround time and contributes to expand the printing business.

Improved overall productivity

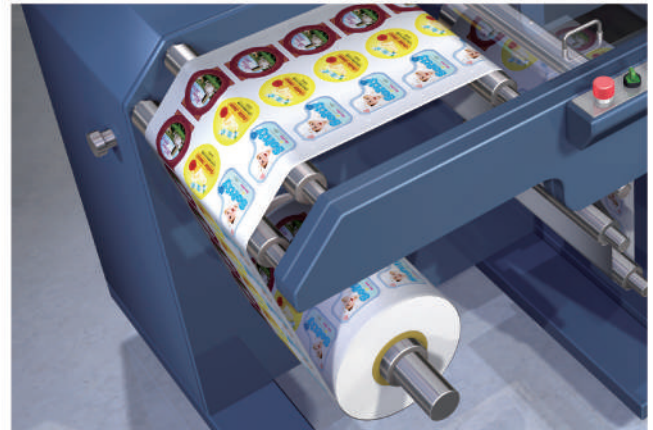
Short warm-up time

Warming-up time from job to next job is minimised by no turning off of fusing unit. It not only improves overall production efficiency by the minimum job switching time, but also minimise the paper waste.

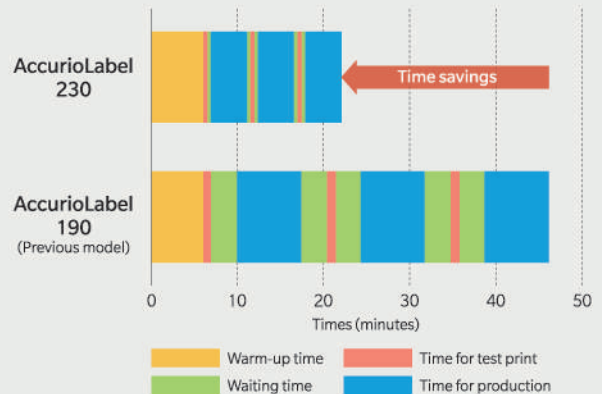
Extended run length

Long continuous printing up to 1,000m

Accepting larger size production without switching time and paper losses. When the toner coverages is low, a print mode that adds colour belts on both sides of paper is available for the long length printing that supplies necessary amount of toner to keep the developer fresh. The colour belts are not necessary when the toner coverage is 3.5% or above.



■ Example of time saving (Printing for 100m x 3jobs)



By the enhanced productivity and shorter warm-up time of AccurioLabel 230 from previous model AccurioLabel 190, total production time is reduced to approximately half of that of AccurioLabel 190 in the case above. It contributes to realise shorter time delivery to customer and accepts more business.



Consideration of operability

Mouse-compatible operation panel

The large 15-inch display adopted is easy to view and operate. The angle of the panel can be freely adjusted to suit the user and the easy-to-understand GUI and guide messages ensure high operability when making settings. A USB mouse can also be connected to improve operability.



Wider print application

Wide media compatibility without pre-treatment

Thanks to digital toner HD^F and Konica Minolta's low-temperature fixation technology, AccurioLabel 230 is compatible with a wide range of media including not only ordinary and matte paper, but also glossy paper, tack paper and film essential for label production. The user can not only select the ideal media to match applications but also print labels without the need for preprocessing.

Label substrates

■ Glossy or matte art paper

For foods or beverages locally produced and sundry goods such as event goods, mementos, etc.

■ YUPO®, PET, PP, etc.

For cosmetic, medical drugs, industrial products, beverages, etc.

Printing on transparency or coloured media

Over printing capability with accurate registration

Over printing kit (Optional) is provided to enhance the usability. It enables digital 4-colour printing on pre-coated media with accurate registration that is realised by newly adopted eye mark sensor.



Printed label on white pre-printed media.

White pre-printed media with eye-marks.

Label printing without limitation of safety issue

Food grade safe toner

The toners of AccurioLabel 230 are in compliance with FDA standards by the evaluation of the authorised organisation considering the safety of indirect food packaging label.

*The FDA standard is stringent safety standards to the potential product that consumers are in contact with food, pharmaceutical and cosmetic by FDA (Food and Drug Administration).

Utilisation for other applications

Banner printing capability

As well as store decoration and floor POP displays, the system can be used for long posters, signboards and an extensive range of other applications. The ability to offer promotional proposals with media mixes combined with labels also contributes to business expansion.



Up to 1,200mm long banner poster, POP, calendar, A3 horizontal book jacket, etc.

Excellent & Consistent Quality

High image quality is realised by Konica Minolta's unique technology through faithfully facing the high-level needs in digital print market. Colour fluctuation is controlled within the minimum under various condition, which ensures stable and beautiful finish for the first through to the last prints. High image quality that brings higher value of printed material generates advantages for the print services.

Multi-gradation Data Processing at a high resolution

High resolution

3,600 (equivalent) × 1,200dpi × 8bits

Combined with the reproductive capability of digital toner HD^E, small characters and fine lines can be printed clearly and colour images beautifully output in rich gradations.

Cutting-edge image processing technology

S.E.A.D. V

Enhanced Konica Minolta's Image processing technology S.E.A.D. V backed up with new generation of image processing ASIC and fully automated colour adjustment functions promise to provide print products with the best quality.



High quality with energy-saving

Simitri HD^E toner

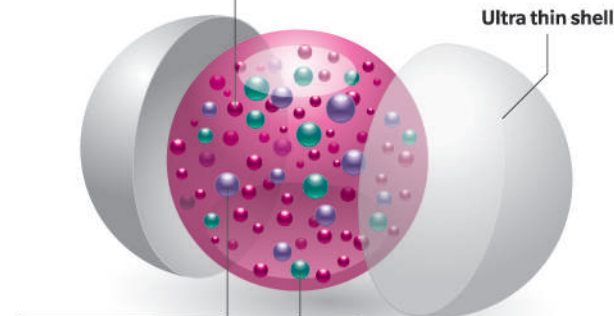
A 3D hybrid structure that contains functional polymers ensures a high level of compatibility with various types of media and enables realisation of ideal natural textures. In addition, it requires only a small amount of heat for fusing, significantly reducing power consumption.

3-dimensional hybrid toner particles

Colourant

More accurate red, less colour fading, enhanced halftone and more natural skintones.

Ultra thin shell



Functional polymer

Higher image quality, reduced energy use and faster processing.

Sharp melt wax

Higher image quality and reduced energy use.



Blue Wool Test: The results according to ISO 105 B2 (lightfastness test).

Cyan 8 ^{*1}	Magenta 6-7	Yellow 8	Black 8 ^{*1}
-------------------------	----------------	-------------	--------------------------

Remarks: The evaluation criteria is classified into 8 levels (1 to 8 levels), and the higher the value, the higher the lightfastness.

*1: The test results indicate that the lightfastness of Cyan and Black toner is ranked as 8 or higher.



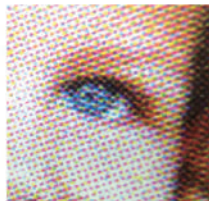
Selectable screens according to the application

High quality screens

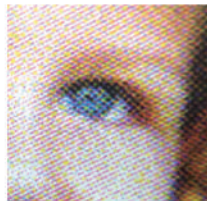
Equipped with a total of 12 types of screen, 6 dot screens, 3 line screens and 3 stochastic (FM) screens, the system can be matched to applications and purpose such as proof output, photograph printing and moire suppression.



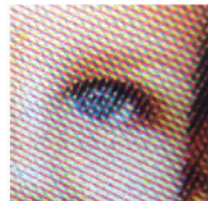
Rough screen
Dot 130L



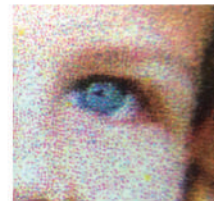
Standard screen
Dot 190L



Fine screen
Dot 270L



Line screen
Line 180L



Stochastic screen
FM-1

Superb small text & thin line quality

Line thinning & edge enhancement technologies

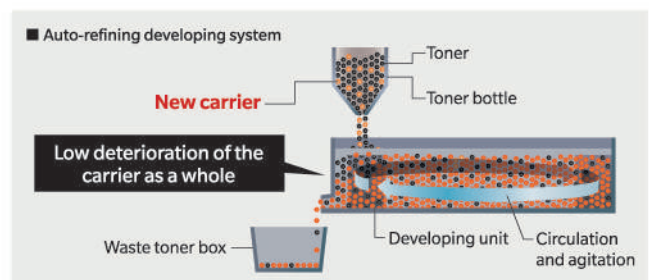
Furnished with a precise outline processing function that reduces blurring and streaking to realise high quality even for colour or outline characters. Characters on food or ingredients labels, for example that tend to be small, or barcodes can be printed clearly.

Offset printing 5pt fonts	AccurioLabel 230	
	<p>Line thinning: OFF Edge enhancement: OFF</p>	<p>Line thinning: Normal Edge enhancement: Strong</p>

Stabilised developer

Auto-refining developing system

A new carrier is supplied together with the toner to refresh the carrier in the developer, stabilising the developer condition to maintain high image quality throughout the system lifetime. The longer developer life also minimises downtime.

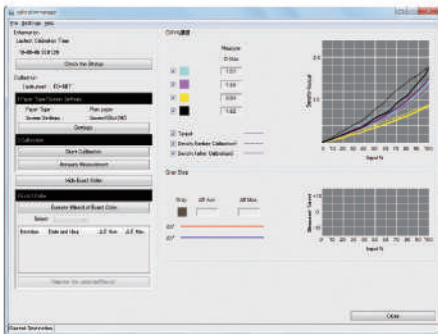


Outstanding Operability

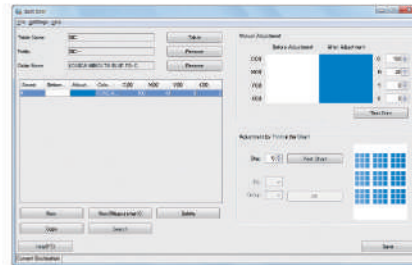
Compared not only to flexography, but also liquid development and inkjet printers, AccurioLabel 230 ensures ease of maintenance. Tasks that take time on analogue machines such as colour adjustments can be performed with ease on a digital machine. The ability to perform operations simply by following on-screen instructions makes it possible to operate the machine with little time needed for training.

Colour Management Utility Color Centro

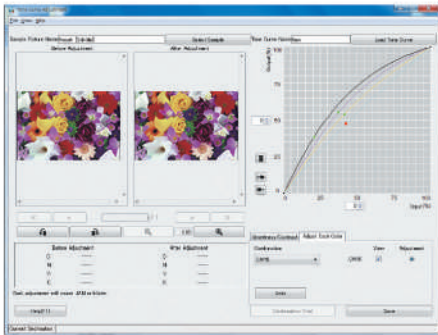
Equipped with colour management software as standard, allowing operation, editing and setting for colour correction, colour profile creation, etc. that best suits the digital press used.



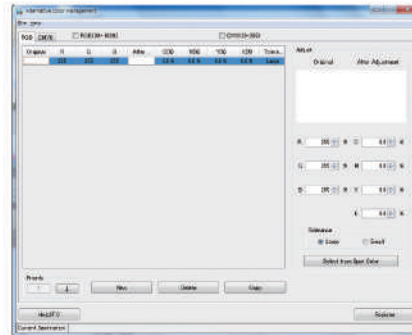
Calibration
Screen to implement calibration. Calibration accuracy can also be checked on the same screen.



Spot colour editing
A function to set special colours designated by the user. Capable of registering colours directly by selection from the colour chart.



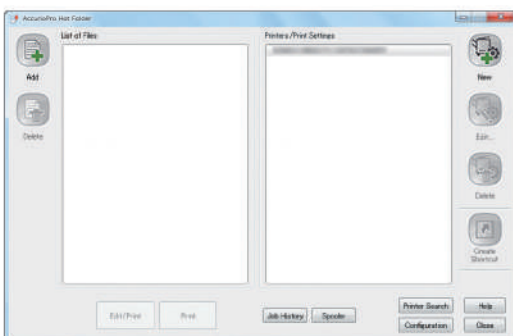
Tone curve adjustment
A function to allow effortless adjustment of contrast and brightness according to preference.



Colour replacement
A function to replace selected colours with others.

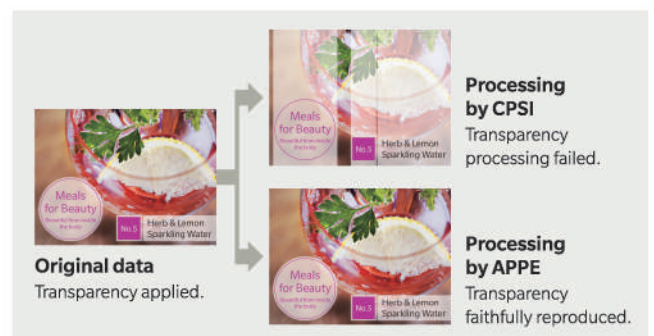
Simplified printing operation AccurioPro Hot Folder

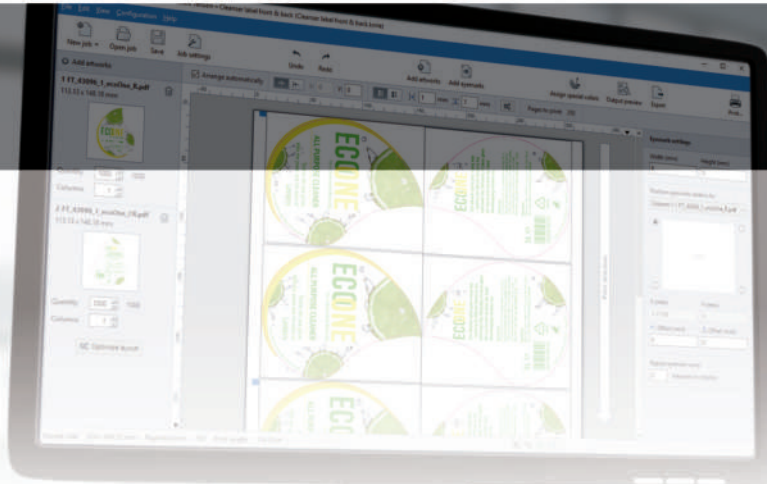
AccurioPro Hot Folder allows you to directly print a PDF or TIFF file without starting an application. You can also preset the job settings and reduce the burden of making print settings.



Equipped with the latest Adobe PDF Print Engine APPE 4.6

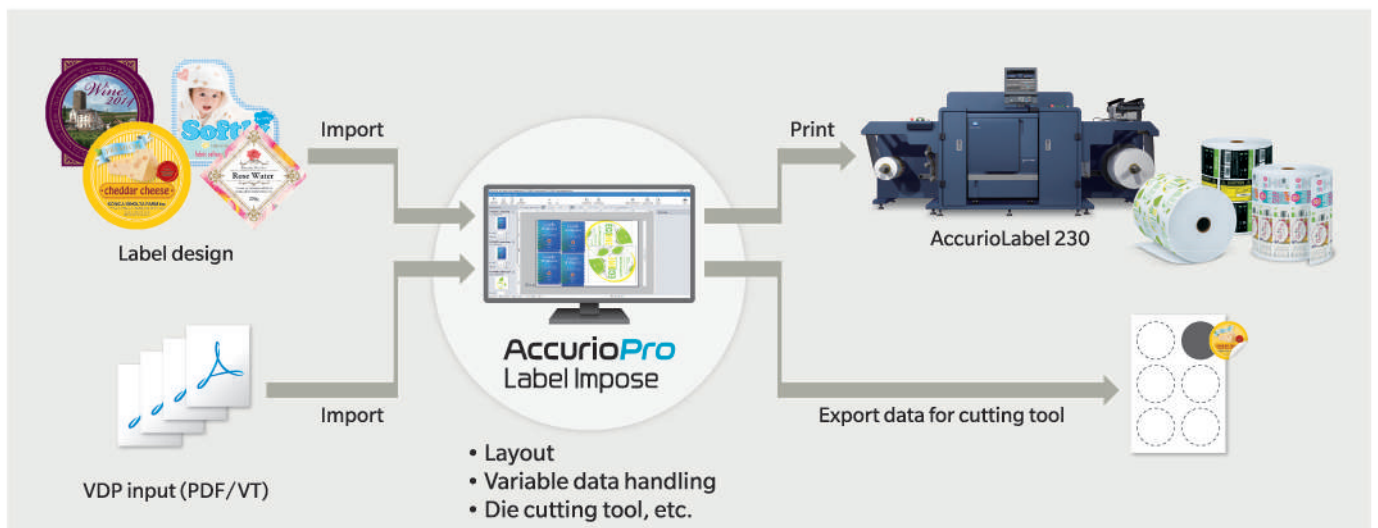
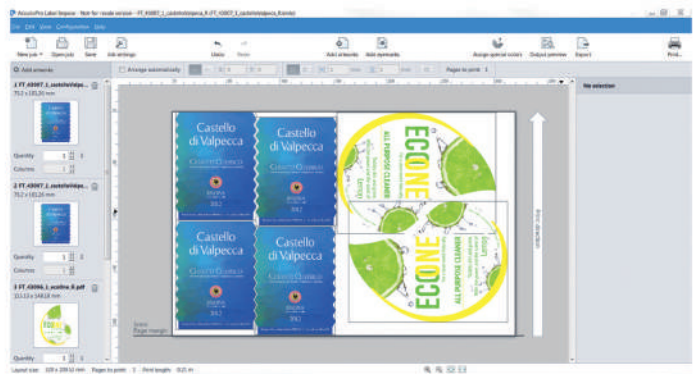
Equipped with Adobe genuine APPE 4.6. Capability of directly printing PDF files without using the print driver enables faithful reproduction of transparency. Optional UK-218 (APPE kit) required.





Indispensable tool for automated label printing
AccurioPro Label Impose

The AccurioPro Label Impose software tool provides the perfect solution. The application not only gives operators a simple and intuitive interface to automatically impose and prepare label jobs for printing. At the same time, the software also enables users to create PDFs as basis for the corresponding cutting tools on the die cutting equipment. Working seamlessly with the AccurioLabel 230, AccurioPro Label Impose perfectly complements Konica Minolta's label press!



■ Key features

Automatic creation of label repetitions:

The application facilitates and automates the creation of label repetitions on the label web.

Variable data content:

The processing of variable data content is simple and straightforward and can easily be incorporated into the automatic label repetitions.

Adjustable spacing:

Operators have the freedom to adjust the spacing between columns and rows individually and as required.

Adding standard and custom eye marks:

The application offers complete flexibility in adding standard and custom eye marks in any desired position for offline finishing.

Arranging artwork:

Users can choose between automatic and manual arrangement of artwork for the label layout.

Gang-up printing:

single sheet can be imposed with just one or various selected artwork motifs.

Die cutting tools:

With the ability to detect additional separations (die lines, spot varnish, foil, etc.) and export them to PDF, AccurioPro Label Impose facilitates the production of the die cutting tools and enables additional decorations on labels.

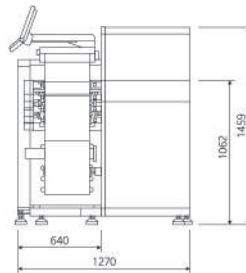
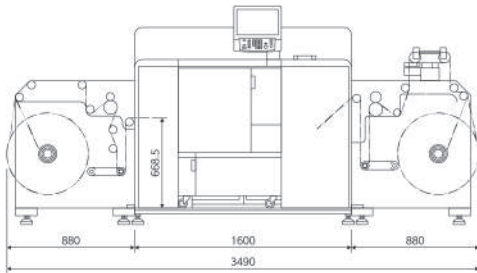
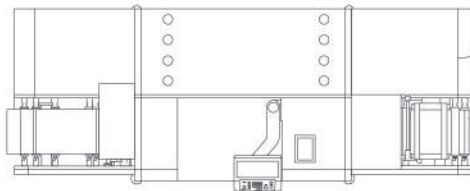
■ Recommended hardware requirements

Operating systems	Windows 7/8.1/10 Pro (64bit)
Memory	4 GB RAM
Disk space	1 GB
CPU	Intel i5 dual core or equivalent
Screen resolution	1,280 × 720 pixels

Major specifications for AccurioLabel 230 (Printer main body only)

Type	Console	
Print method	Dry-toner electrophotography	
Colour support	Full colour (CMYK)	
Printing resolution/gradation	3600 dpi (equivalent) × 1200 dpi / 8 bit	
Printing image size	90 × 115 to 320 × 1,195 mm	
Paper width	250 to 330.2 mm	
Paper thickness range	81 to 256 gsm (80 to 250 µm)	
Print media	Non-tack paper (81 to 176 gsm) Tack paper (136 to 256 gsm) Tack coated paper G/M (136 to 256 gsm) Tack Synthetic paper (136 to 176 gsm) Tack PP (136 to 176 gsm) Tack PET (136 to 216 gsm)	
Print speed	Speed range	Max.: 23.4 m/min. (76 fpm) High: 18.9 m/min. (62 fpm) Middle: 13.5 m/min. (44 fpm) Low: 9.45 m/min. (31 fpm)
	By media weight	81 to 176 gsm: Max. 23.4 m/min. 177 to 256 gsm: Max. 18.9 m/min.
Compatible file formats	PS, PDF (APPE supported), 8 bit TIFF	
VDP file format	PPML, PDF-VT	
Power source (Single phase)	Metric: 220 to 240 V 50/60 Hz, 25 A Inch: 208 to 240 V 60 Hz, 24 A	
Max. power consumption	Metric: 6,000 W, Inch: 5,760 W	
Dimensions (W × D × H)	1,200 × 903 × 1,478 mm	
Weight	292 kg	

* Specifications and features of the delivered product are subject to changes.



Major Specifications for Unwinder/Winder unit DP330

Maximum roll size	Ø 600mm
Power requirements	3 phase 380V, 20A, 50/60Hz
Print media	Paper: Tack paper, Non-tack paper Film: Tack film (Synthetic paper, PP, PET), etc.
Dimensions (W × D × H)	3,550 × 2,470 × 1,540 mm
Weight	Winding Unit: approx. 423kg Unwinding Unit: approx. 446 kg Platform: approx. 335 kg

Specifications for embedded controller

Type	Embedded (AIO) type Equivalent to IC-605B with UK-104
CPU	Intel Core i5 4570S 2.9 GHz (CPU in printer)
Memory	System Memory 16 GB
HDD	1 TB × 3 + 500 GB × 1
Network	10/100/1000 Base-T
PDL Language	PostScript 3 (CPSI 3020), PDF Ver. 1.7, TIFF Ver. 6 Compliant, PPML Ver. 2.2, PCL5c equivalent, PCL XL (PCL6 Ver. 3) equivalent, APPE Ver. 4.6*1, PDF/VT Ver. 2*1
Protocol	TCP/IP, NetBEUI, IPP, WSD, SMB, Bonjour
OS applicable	Windows 7, 8.1, 10 Windows Server 2008/R2, 2012/R2, 2016, 2019 (Includes 64 bit versions) Mac OS X 10.9, 10.10, 10.11, 10.12, 10.13, 10.14
Main fonts	Adobe 136 fonts, PCL 80 fonts
Driver	PS Plugin driver
Konica Minolta applications applicable	PS Web Connection, PS Net care Device Manager, Color Centro, AccurioPro Hot Folder

*1 UK-218 (Option) required

AccurioLabel 230



*1 Optional

<https://www.konicaminolta.hk/hk/en-us/product-category/2/digital-printing-production-system>

Product appearance, configuration and/or specifications are subject to change without notice.
This product is not available for some countries or regions.

KONICA MINOLTA, symbol mark, Giving Shape to Ideas, AccurioLabel, AccurioPro, Simitri, S.E.A.D. and KONICA MINOLATA OPTIMIZED PRINT SERVICES are registered trademarks or trademarks of KONICA MINOLTA, INC.

Windows and Windows Server are registered trademarks or trademarks of Microsoft Corporation in the U.S. and other countries.

Adobe and PostScript are registered trademarks or trademarks of Adobe Systems Inc.

Mac OS is registered trademark or trademark of Apple Inc.

All other brands and product names are registered trademarks or trademarks of their respective companies or organisations.



From consulting, system design, to operations, Konica Minolta offers total support to optimise your office output environment.
<http://www.biz.konicaminolta.com/services/ops>



MKT-1908-663

Requirements for safe use

- Please read and follow the instruction manual to ensure safe operation.
- Only operate using appropriate power supply and voltage.
- Connecting the earth wire to an inappropriate place may cause explosion or electric shock. Please connect accordingly (Taiwan and the Philippines only).

Konica Minolta Business Solutions (HK) Limited

Room 208, 2/F, Eastern Centre, 1065 King's Road, Quarry Bay, Hong Kong
Hotline: (852) 2565 2111



AccurioLabel